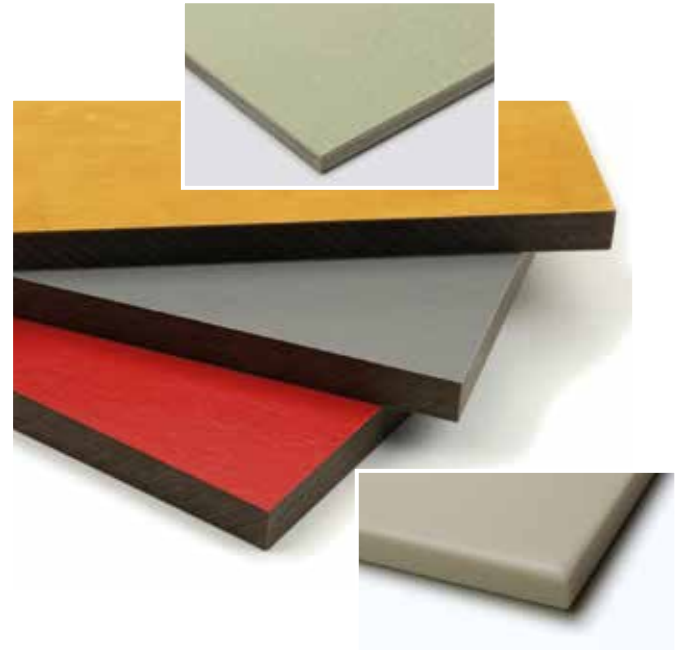
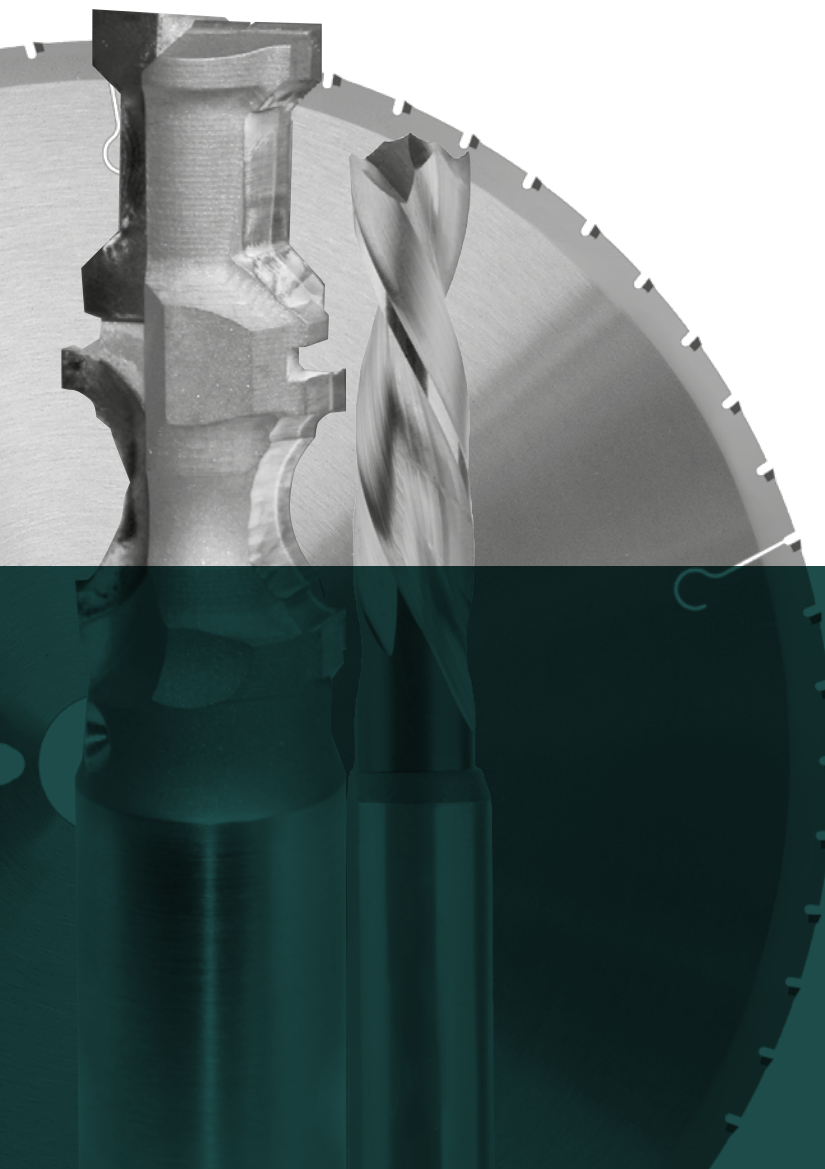


## TOOLS FOR PROCESSING SOLID CORE- AND SOLID SURFACE MATERIALS



### Cutters, drill bits and circular saw blades for CNC-machines

Whether it's acrylic resin panels, compact coatings, mineral materials or epoxy resin – the specially designed DP-tipped Stehle tools are outstanding at processing hard, abrasive panel materials.

# → JOINTING – „FLEXIBLE“

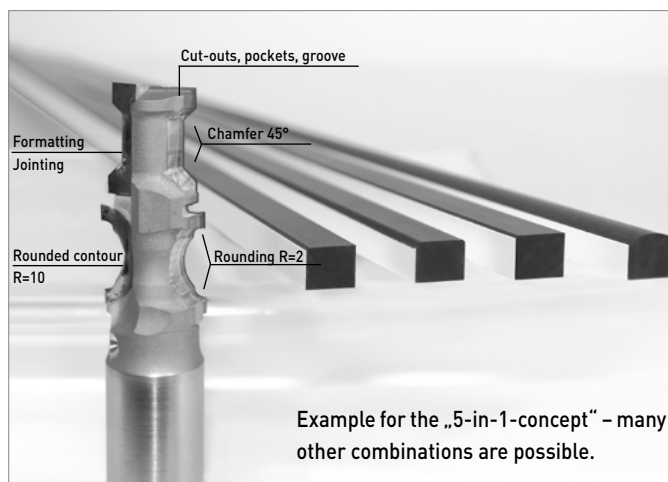
## FLEXIBLE CUTTER-CONCEPT: ACCORDING TO CUSTOMER REQUIREMENT

It's perfect for anyone processing a wide mix of materials for a broad customer base, also batch-size 1, or anyone purchasing a cutter who is uncertain which edge shapes their customers will request in the future.

**Example - by using 1 tool the user can:**

- I Joint, mill, round, and mill rounded contours
- I Thanks to its plunge tip, the cutter can also dip, for instance for pocket milling

→ 5 functions – only 1 place on the tool changer

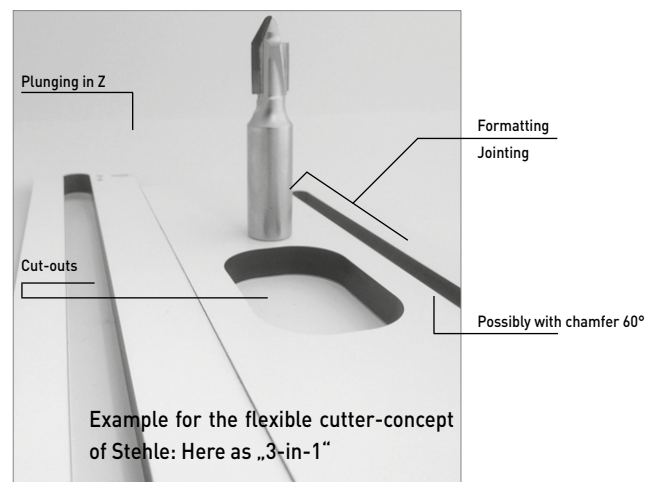


- I The diamond tips guarantee the longest available edge life with these abrasive materials
- I Not available ex stock, design according to customer requirement

**Example - by using 1 tool the user can:**

- I Plunging in Z-direction
- I Formatting, jointing, milling cut-outs
- I A 60° chamfer can be milled, too

→ 3 functions – 1 one place on the tool changer

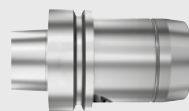


## INTERESTED?

→ Send a sketch of your preferred cutter with blank form to Stehle

## STEHLE RECOMMENDATION:

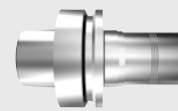
→ Chucked in a precision clamping device HSK 63 F, it is possible to create chip-free, smooth edge surfaces without grooves.



**Hydro Clamping System ps-System**



**Heat shrink-fit chuck**



**Power shrink-fit chuck Tribos**

Concentric accuracy	< 0,008 mm	< 0,003 mm	< 0,003 mm
Max. RPM	30.000 min-1	30.000 min-1	40.000 min-1
Recommended application area	High demand applications.	High demand applications.	High demand applications.
Handling	Very user-friendly clamping devices. Pressure introduced effortlessly with an allen wrench.	Shrinking device and possibly additional induction coils for larger tool diameter necessary.	Clamping and unclamping using a hydraulic press.
Version or accessories for use on 5-axis machines, e.g. for 3D molds.	Use on 5-axis machines always possible.	Heat-shrink chuck extensions (L to 250 mm) available, or as a long heat-shrink chuck (A=160 mm).	Very slim design. TRIBOS extensions (L=160 mm) available.
Stock availability	Available ex stock	Available ex stock	Available ex stock

## → JOINTING – „PLENTY OF THE SAME“

Perfect for specialized solid core and solid surface materials processors who work with clearly defined panel thicknesses, chamfers, or radii, also in large scale production.

### Advantages

- I The diamond tips guarantee the longest available edge life with these abrasive materials
- I Chip spaces and tooth geometries ideal for these materials and very good milling quality
- I Standard program available ex stock
- I Design according to customer requirement is possible at any time

### INTERESTED?

→ Latest stock program in the STEHLE Online-Catalog at [www.Stehle.com/products](http://www.Stehle.com/products) or send us a sketch of your preferred cutter.



DP tipped high-performance roughing shank-type cutter for speedy pre-sizing of workpieces in rough quality.



The already extensive range of straight edge PCD shank-type cutters with different diameters, cut lengths and cutting wings now got a further member: The Z=3 high-performance tool with a Ø12 mm diameter and 15 mm cut length for thinner panels.



Fancy a drum profile on the edge? The new PCD-radius profile cutter provides panels with up to 14 mm with a radius R = 16.

## TIP: MODELLING OF SURFACES

Requirement: 5-axis machining centres

The diamond-tipped ball-nose cutter is best for cutting profile grooves, contour millings, shaft profiles on furniture parts or wall panels, and much more, for the longest service life in abrasive materials.

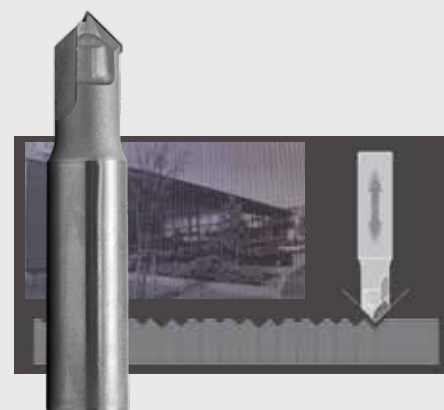
→ Cutters available ex stock with R = 10, 15 and 20 mm



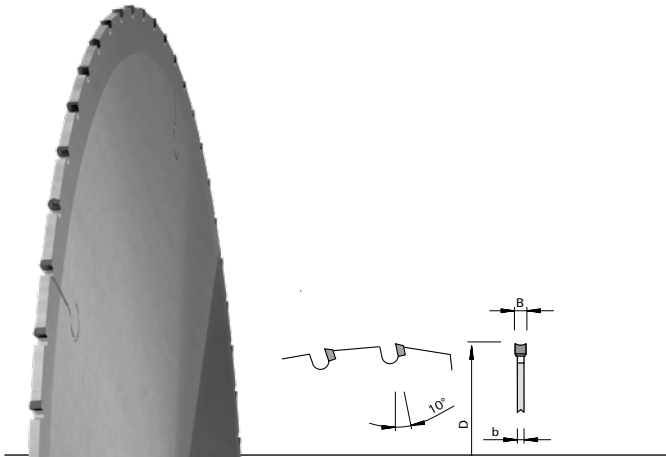
The diamond-tipped relief milling cutter has a V-groove shape.

The milling cutter is controlled by special software that adopts image information from grayscale millings on wood materials. The effect is particularly striking when panel surfaces and middle layers are made of different materials, such as a colored surface combined with a dyed-through MDF panel.

→ Cutters available ex stock



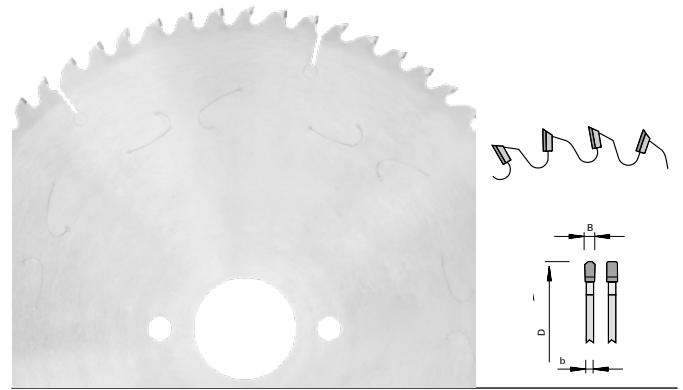
## → SAWING / SIZING CUT



### „Flexible“ with the Stehle nn-System DP flex saw blade

- I Diamond-tipped saw blade with innovative small chip spaces and hollow-back tooth geometry
- I Precise cut in abrasive solid-core materials with long service life
- I Flexible and best for conventional wood material panels, such as raw and coated particle and MDF panels, plywood panels, HDF, WPC, cement, gypsum fiberboard, alucubond and more...
- I Very quiet in operation

→ Available for CNC-machines, table saws, vertical panel sizing saws



### „Plenty of the same“ with the sizing saw blade DP „TR-F-FA“

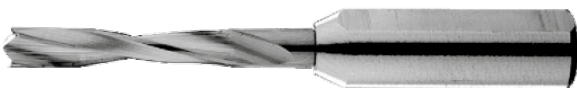
- I Diamond-tipped saw blade with asymmetric chip evacuation gap geometry
- I For sizing cuts in single sheets and stacks in materials such as GFK/CFK, fiber cement boards, resin-impregnated panel boards
- I For smooth cutting surfaces and clean entries and exits
- I Ideal for high-volume use

→ Only available for table saws and vertical panel sizing saws

### INTERESTED?

Latest stock program in the Stehle Online-Catalog at [shop.stehle-int.com](http://shop.stehle-int.com)

## → DRILLING



### Mosquito dowel bits with solid carbide body

- I For chip-free drilling of dowel holes
- I Chip-free hole edges thanks to special cutting edge geometry with spurs
- I High process safety thanks to constant quality of the bores for a long time
- I Boring part made from fine-grain solid tungsten carbide



### VHW high-performance dowel bits, even for through holes

- I For drilling of through holes and dowel holes from 5 -10 mm
- I Longest edge life with the best tear-free drilling quality, including on the exit side
- I Patented cutting edge geometry produces extremely low cutting pressure and therefore low heat development
- I Boring part made from fine-grain solid tungsten carbide
- This results are, a highly efficient result of thousands of perfect bores over its edge life

# → YOUR INQUIRY



## Customer address

Company	Contact person	Phone	Date
Road	Postcode / City	e-Mail	

Please select the cutter type you need and complement the specific requirements. We would be delighted to create you an individual offer for your request.

Please mark and complete:

### Joining/Dividing

.....mm

### Grooving/Cut-outs

yes  no

### Edge processing

Chamfer above: .....degree

Chamfer below: .....degree

Flanging radius above: R=.....mm

Flanging radius below: R=.....mm

Radius: R=.....mm

### Milling-volume

„Flexible use“  
 „Plenty of the same“

### Machine

Grid-/Nesting-table  
 Consoles/suction cup  
 3-Axis  
 4-/5-Axis

### Number of cutters

.....pieces

→ Send a sketch of your preferred cutter with filled out blank form to Stehle:  
 by Fax: +49 (0)7451/93444  
 by Mail: sales@stehle-int.com

## Sketch & Notes



**Stehle**

Due to the variety of machines  
and tasks we recommend to discuss  
your special application cases with  
a Stehle tool representative.



[www.stehle-int.com](http://www.stehle-int.com) → Contact

Latest stock program in the  
Stehle Online-Catalog:



[shop.stehle-int.com](http://shop.stehle-int.com)

Ledermann GmbH & Co. KG  
Willi-Ledermann-Straße 1  
72160 Horb am Neckar / Germany

T +49 (0)74 51/93 222  
F +49 (0)74 51/93 444

[info@stehle-int.com](mailto:info@stehle-int.com)  
[sales@stehle-int.com](mailto:sales@stehle-int.com)  
[www.stehle-int.com](http://www.stehle-int.com)